



TAMIM

— Apartments



Homes for smart living

6th Block, Krishnapura, Katipalla, Mangalore

Ph: +91 9482 068222 / 9895 068222
+91 9964 012789 / 9400 080005

Tamim Builders

Tamim Builders one of the most trusted and popular builders, developers & promoters in South India, that owns and manages a premium property portfolio of residential apartments in Karnataka, Kerala & Mumbai especially in Kasaragod and Dakshina Kannada Dist.

The company was established in Muscat on 1996, then extended business to India. Our vision and approach towards organized and well planned development, technical expertise, global exposure has led to our growth.

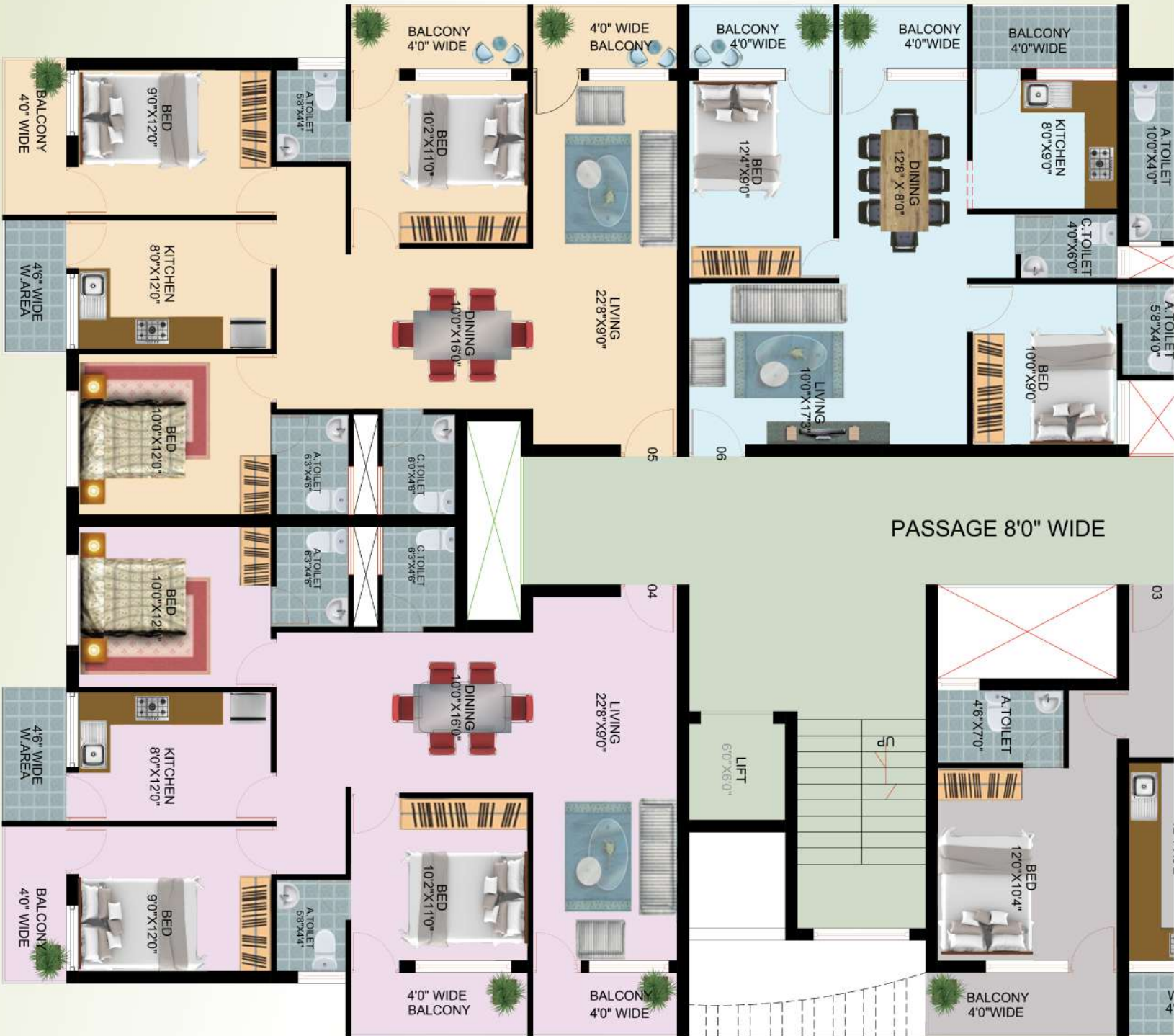


Tamim Apartments

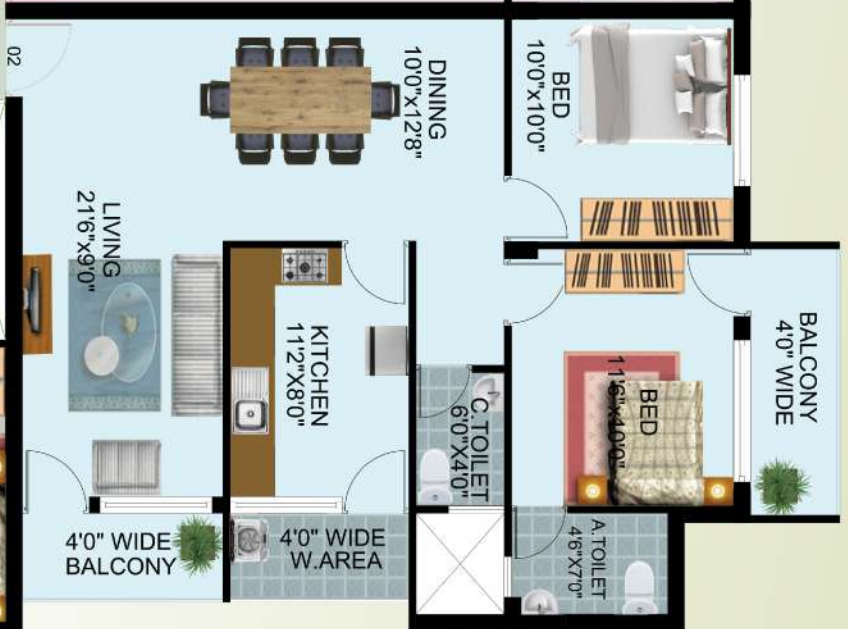
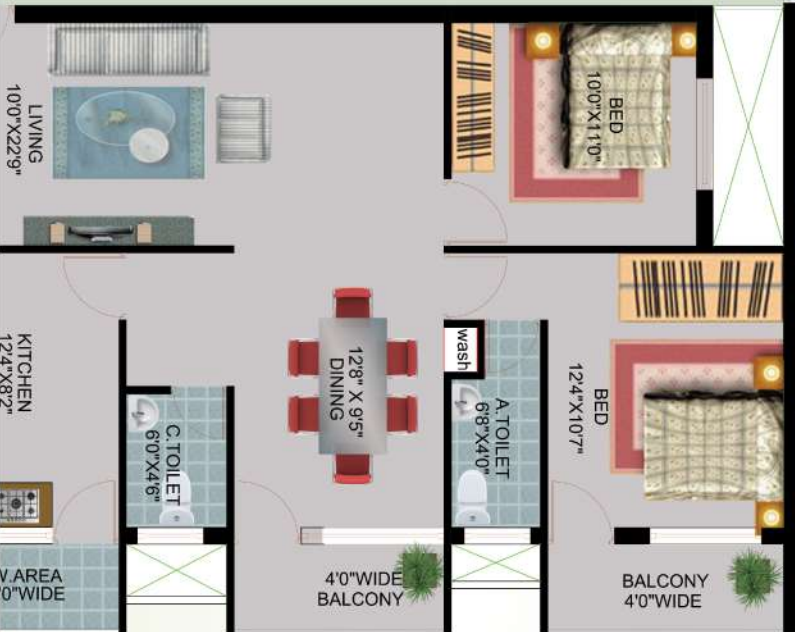
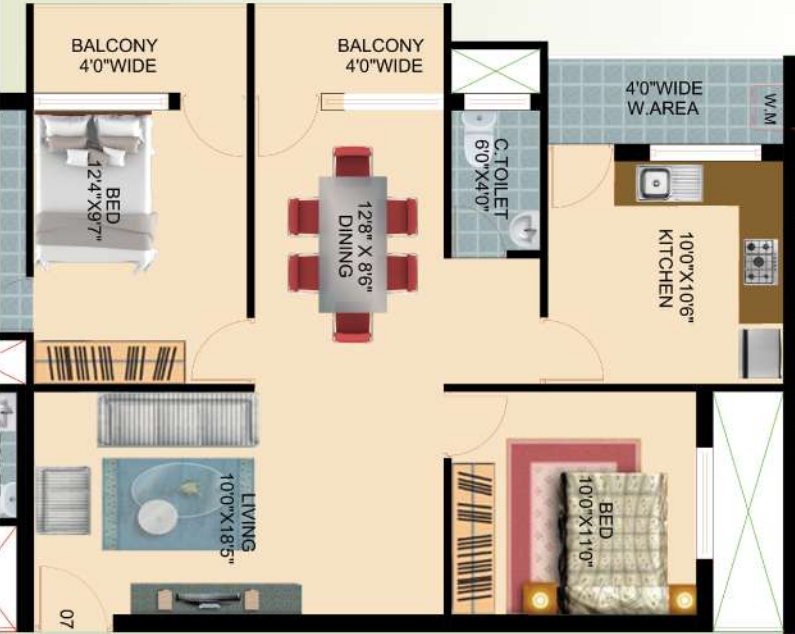
KRISHNAPURA

Tamim Apartments situated at 6th Block, Krishnapura, just 2km from Surathkal Junction, 2mtr from Surathkal-Katipalla Highway, nearby Hira Public English Medium School, Govt. PU College, Women's College, Nurul Huda English Medium School, 4 Masjids. Surrounded by Church and Temples within 1 km distance and situated just 1km away from Play Ground and Park.





Homes for smart living





FLAT 1 & 2 (2 BHK) - 1108 Sq.ft

FLAT No.	BUILDING AREA
001	1108 Sq.ft
002	1108 Sq.ft
003	1594 Sq.ft
004	1417 Sq.ft



FLAT 3 (3 BHK) - 1594 Sq.ft

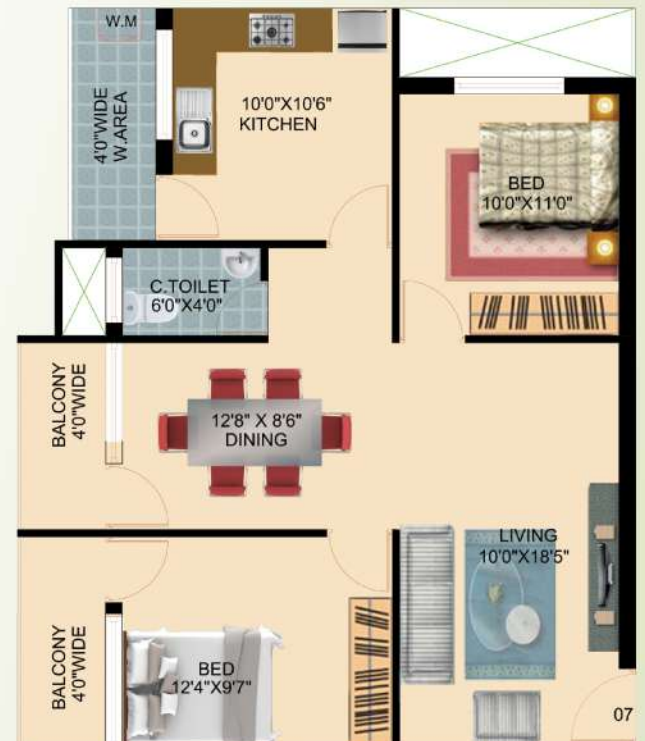


FLAT 4 & 5 (3 BHK) - 1417 Sq.ft

FLAT No.	BUILDING AREA
005	1417 Sq.ft
006	980 Sq.ft
007	1157 Sq.ft



FLAT 6 (2 BHK) - 980 Sq.ft



FLAT 7 (2 BHK) - 1157 Sq.ft

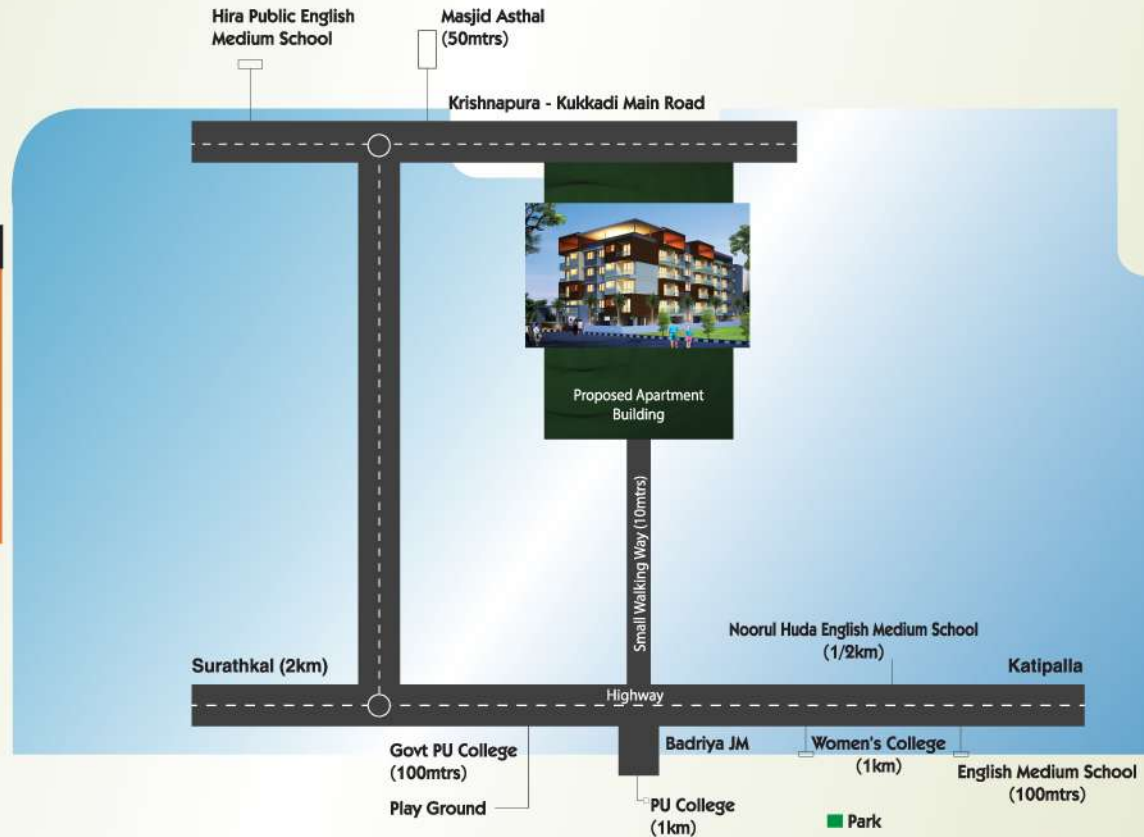
SPECIFICATIONS



- Generator for full power backup with sound proof enclosure Automatic elevator facility
- Concrete interlock paving for car parking & yard.
- Children's Play Area with equipments.
- CCTV Security System.
- Cable TV Facility.
- RCC Structure designed as per IS 456-2000
- Laterite / Solid Block masonry.
- Exterior cement paint for exteriors.
- Putty finished acrylic distemper wash for ceiling & walls.
- Granite floorings for internal spaces of the apartments.
- Ceramic Anti Skid type tiled flooring for toilets.
- Ceramic glazed tiles dado upto 7' ht.
- Hot & Cold mixer unit for all toilets.
- Provision for Geysers.
- CP Fittings (ARK / JAL or equivalent make).
- Pastel colored Sanitaryware (Hindware, Parryware or equivalent).
- Attractive melamine coated decorative main entrance door.
- RCC Door frame with flush door shutters for bedrooms.
- Brass hardware for main door & SS for other flush doors.
- TV Point, Telephone Point with intercom facility
- Separate pastel colour wash basin for dining.
- AC Point (MB, Telephone point, computer point and TV point with two way light control)
- All windows opening on the exterior walls of the building for maximum privacy.
- Granite kitchen platform with bullnosing & with stainless steel sink.
- Provision for water purifier, refrigerator & Washing machine.
- Modular type electrical switches of superior make.
- Open view for each apartment.
- Wide passage area provided with open to sky.
- Covered car parking (at extra cost).
- Water supply with borewell / open well in addition to the corporation water supply.



Location Map



For Booking Contact :



TAMIM
BUILDERS & DEVELOPERS

TAMIM BUILDERS & DEVELOPERS

6-T-5/15, First Floor, Yen Yen Complex
6th Block, Krishnapura
Katipalla Village, Mangalore - 575 014

+91 9482 068222 / 9895 068222
+91 9964 012789 / 9400 080005

Email: markconstruction222@gmail.com

Architects & Engineers

SHAFFI ASSOCIATES

ARCHITECTS ENGINEERS INTERIORS

3rd Floor, Al-Rahaba Plaza,
Near State Bank, Mangalore

Cell: +91 98451 91327

Tel: +91 824 4288172

Email: shaffiates@gmail.com

This Brochure is only conceptual and is not a legal offering.

The promoters / architects reserve the right to add / delete / alter any detail / specifications / elevation mentioned herein