



COMMERCIAL & RESIDENTIAL APARTMENTS

*a thing of beauty is a joy forever...*





In real estate development, HIGHLAND INFRASTRUCTURE & DEVELOPERS is a brand name synonymous with superior and well designed spaces for living and working.

Having developed scores of signature properties in Mangalore and around over the years, our unrelenting quest for continuous learning incessantly motivates us to create maximum value for our customers across all segments.

Smart City empowered by a clear vision and constant innovation, HIGHLAND INFRASTRUCTURE & DEVELOPERS strides forward with a commitment to set new standards in architectural design and construction.

Situated in Main Road of Bhatkal, it provides you Commercial Space and Residential flats that are a joy to live in. This peaceful locality falls within easy reach of the Schools, Railway Station and places of Worship.

Smart City is a prestigious venture and an optimum combination appealing architecture, good planning and top quality construction ensure that every apartment is an epitome of style, utility, comfort and security. And the Commercial spaces are well built with all the essential amenities for real estate sector.

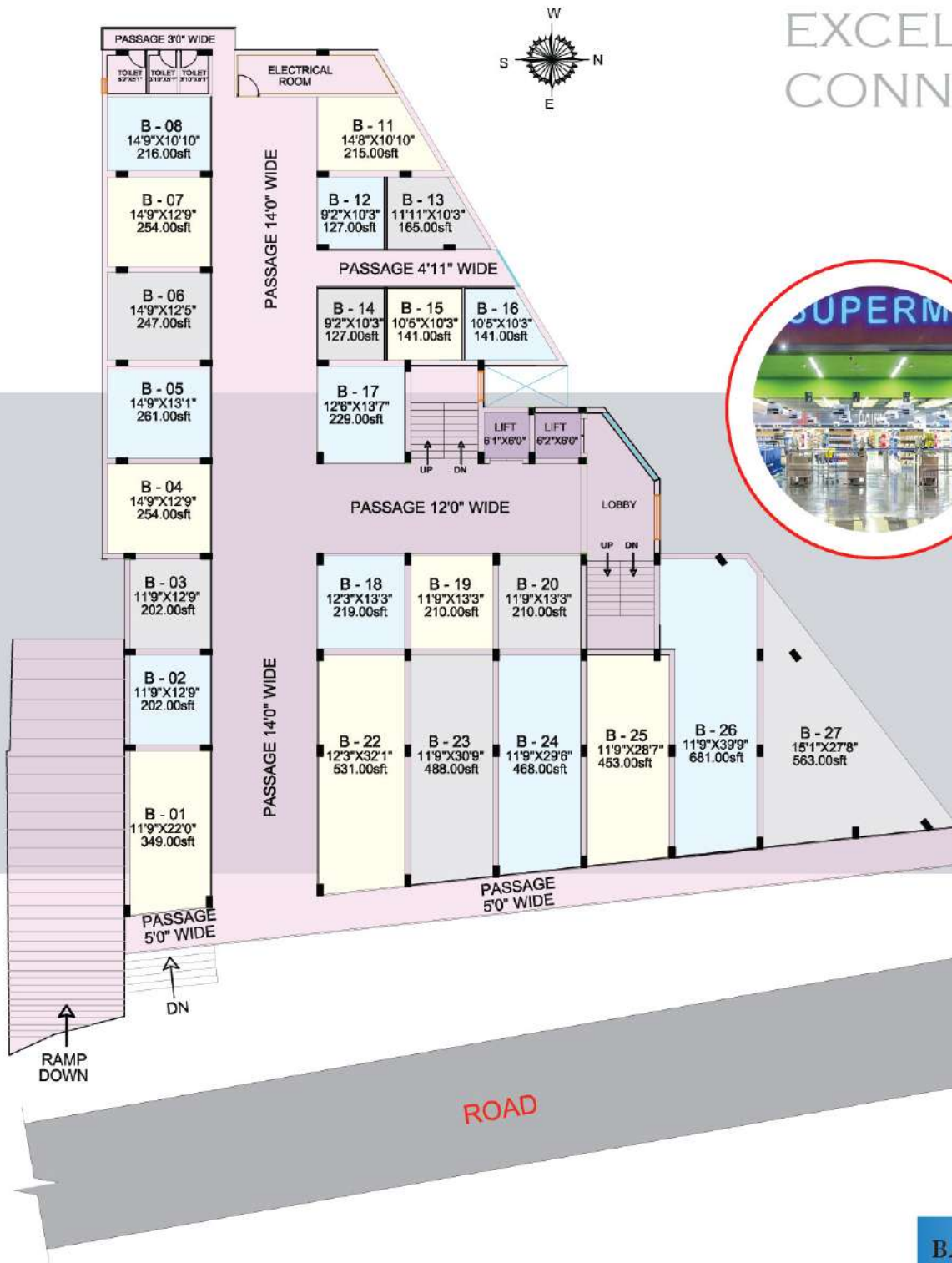
Smart City will certainly prove to be a wise investment for you in the future. A great project with vast scope to start any profitable business. This is an ideal location makes it a supreme venture.

# SMART CITY –

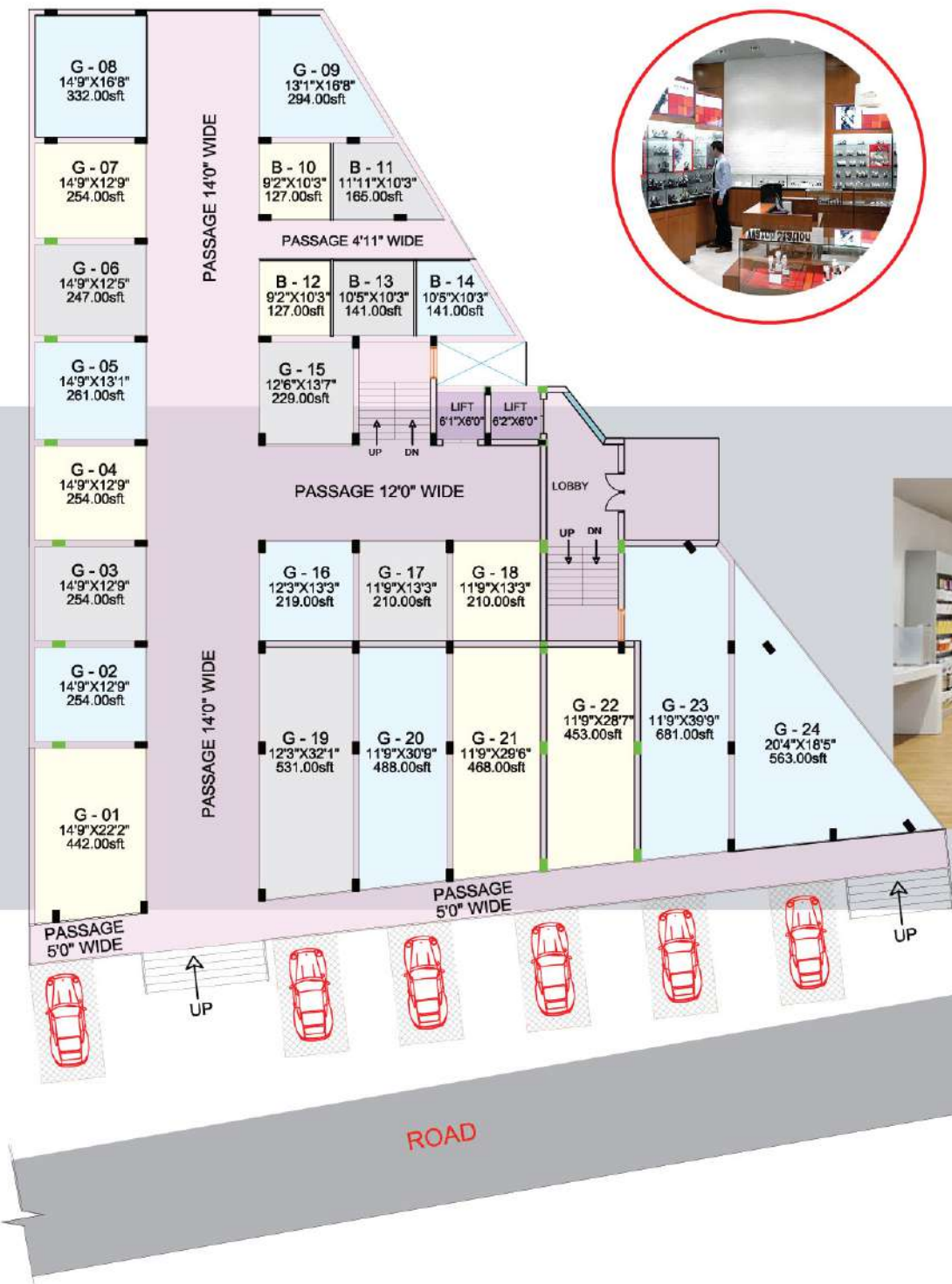
The preferred life



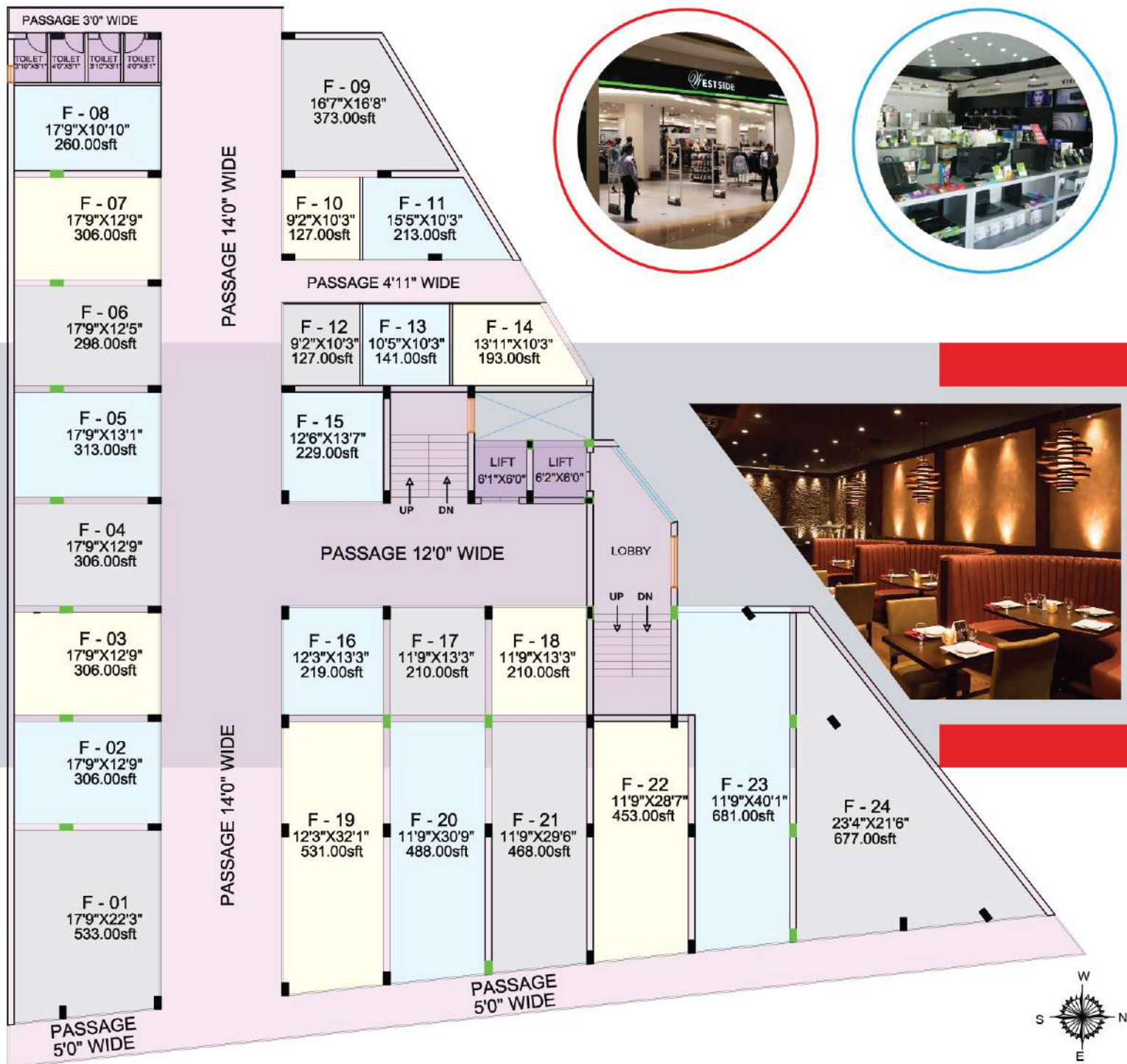
# EXCELLENT CONNECTIVITY



**BASEMENT FLOOR PLAN**

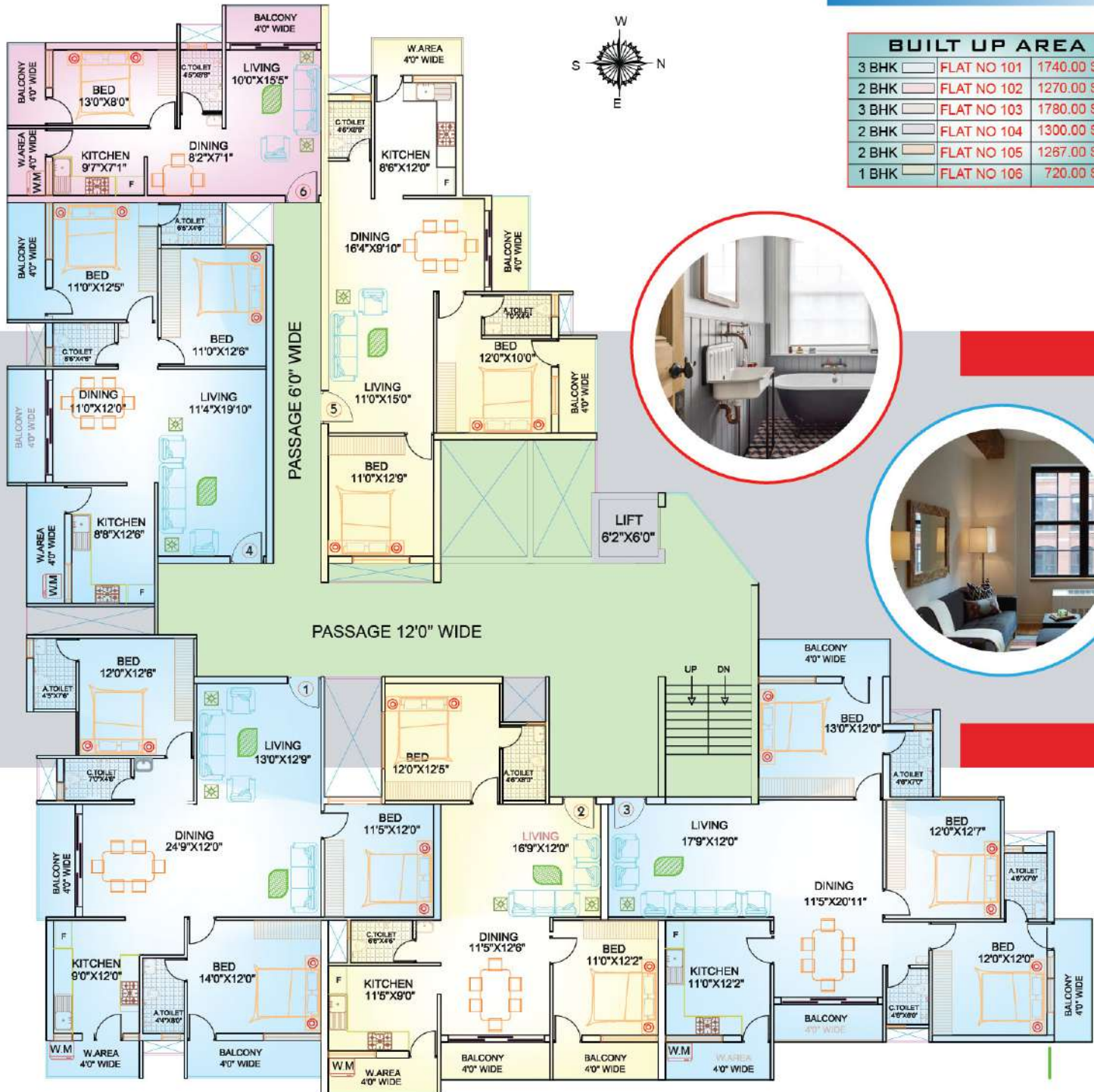


**GROUND FLOOR PLAN**



**FIRST FLOOR PLAN**

# TYPICAL FLOOR PLAN



| BUILT UP AREA |             |             |
|---------------|-------------|-------------|
| 3 BHK         | FLAT NO 101 | 1740.00 Sft |
| 2 BHK         | FLAT NO 102 | 1270.00 Sft |
| 3 BHK         | FLAT NO 103 | 1780.00 Sft |
| 2 BHK         | FLAT NO 104 | 1300.00 Sft |
| 2 BHK         | FLAT NO 105 | 1267.00 Sft |
| 1 BHK         | FLAT NO 106 | 720.00 Sft  |



## LOCATION



## SPECIFICATIONS:

- External painting of the building with exterior emulsion paints.
- wooden door for main entrance.
- R.C.C. door Frames with good quality decorative flush door shutters for rooms and Fibrotech shutters for toilets.
- Colour Coated Aluminium window frames
- Overhead water tank and underground Sump Tank with required pumps.
- Granite Flooring for the common areas and Staircase.
- Superior 24" x 24" Vetrified floor tiles for internal spaces of the Apartment.
- Granite platform with Bull nosing and wet granite/Stainless Steel sink for Kitchen
- C.P. Plumbing fittings for Toilets and Kitchen
- Branded Sanitary ware in all the toilets.
- Putty finished Acrylic Distemper painting for walls.
- Modular Electrical switches
- Electrical wiring of Reputed brand
- Superior Designer locks for all inside doors.
- Adequate fire fighting systems.

## COMPLETED PROJECTS



**SMART CITY**  
Thokkottu, Mangalore



**ROYAL PLANET**  
Joppina Mogeru, Mangalore



**ROYAL PRIDE**  
Bolar, Mangalore



**SMART PLANET**  
Thokkottu, Mangalore



**MAX CITY**  
Rao & Rao Circle, Mangalore



**SAHAKARI SADANA**  
Near Rao & Rao Circle, Mangalore



**GARDEN CITY**  
Thokkottu, Mangalore



**GREEN CITY**  
Thokkottu, Mangalore



**CITY MAX**  
Vamanjoor, Mangalore



**ROYAL TOWER**  
Bibi Alabi Road, Mangalore

## ONGOING PROJECTS



**B.R. USHA KIRAN**  
Bolar, Mangalore



**TAMAM APARTMENTS**  
Krishnapura, Mangalore



**KINGDOM TOWER**  
Thokkottu, Mangalore



**KANKANADY GATE**  
Kankanady, Mangalore

### ARCHITECTS & ENGINEERS



### SHAFFI ASSOCIATES

3rd Floor, Al-Rahaba Plaza, Mangaluru  
Ph : 98451 91327, 0824 - 4288172  
e-mail : shaffiates@gmail.com

### STRUCTURAL CONSULTANTS

**Design Associates**  
Mangalore  
Mob: 9845080108

### CONSTRUCTION

**SHAFCON MARK**  
Engineers & Contractors  
Mangalore.  
Mob: 9895068222  
9845191327

## PROMOTORS:



# 2, Gazali Complex, Main Road, Near BSNL Tower, Bhatkal - 581320



FOR BOOKING CONTACT :  
**Mob:97423 53073 / 98950 68222**  
**90369 16916**